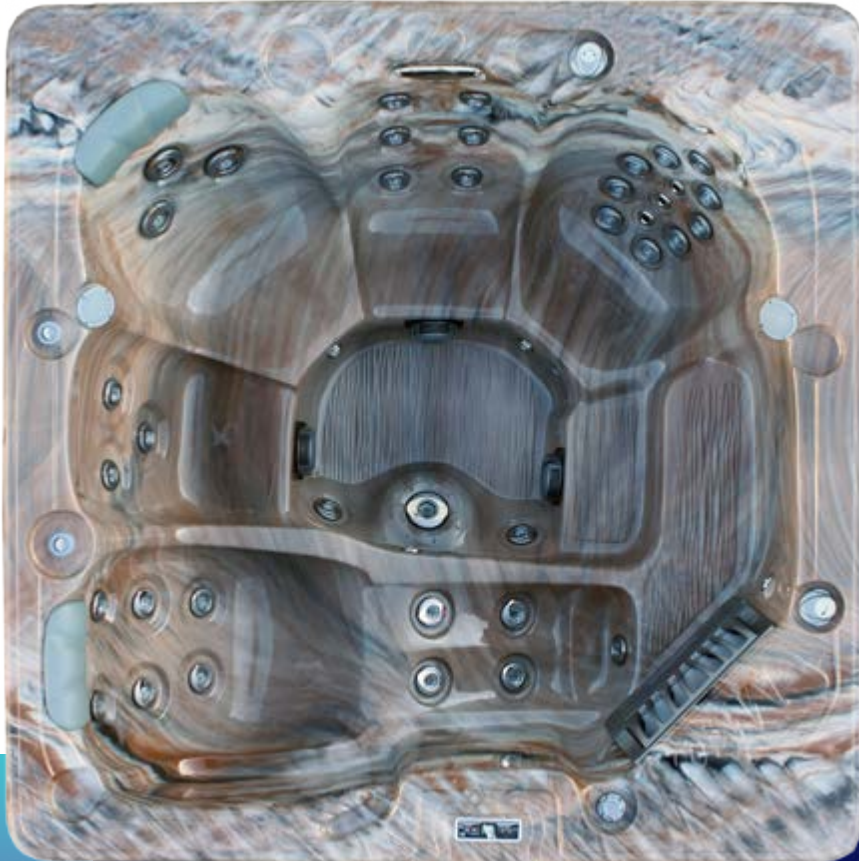




MP 10000 L

BASIC SPECIFICATIONS

Size: 82" x 82" x 39"
Jets: 42
Gallons: 325
Pumps: Two 6.0 bhp





MP 10000L

Weight: Dry / Filled: 635 lbs. / 3435 lbs.

Size: 82" x 82" x 39"
Jets: 42 Stainless Steel Jets
Gallons: 325

System

Cascading Waterfall
Electrical 220V / 60A
Gecko® Power Pack
*VGB Compliant Intake
Pumps (Qty / Size BHP) 2 / 6.0
Pump Frame 56
4kW Heater
Filtration System Size 50 ft.2
Icynene™ Insulation
LED Underwater Lighting

Interior / Exterior

Acrylic Surface Material
Maintenance Free Skirting
ABS Bottom Surface
Massage Boosters
Comfort Padded Headrest
Simple Stick

Weight: Dry / Filled (approx.)

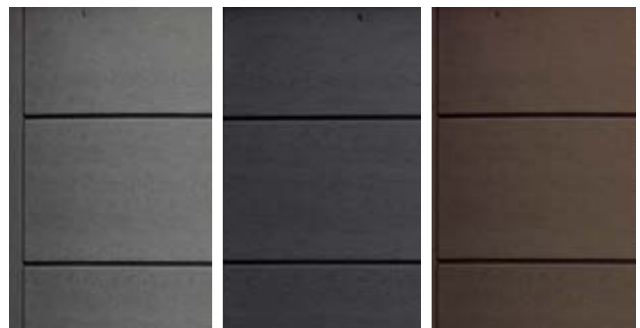
635 lbs. / 3435 lbs.



Lucite.SPA



Maintenance Free Synthetic Skirting Options



Gray

Black

Espresso

Mira Spas reserves the right to change product selections and/or make product modifications.
Your Mira Spa Dealer/Contractor is an independent business person and not an agent or employee of Mira Spas or any of its subsidiaries. Neither Mira Spas nor its subsidiaries accept any responsibility for any representations, statements or contracts made by any Hot Tub Dealer/Contractor.

Note: Color samples shown are representations of actual color, but are for identification only. Because the color may vary, Mira Spas does not guarantee that this color will be an exact match to the image shown.

The Bluetooth® word mark and logo are registered trademarks owned by Bluetooth SIG, Inc.
Other trademarks and trade names are those of their respective owners